



POTATO PORTFOLIO

Maximise productivity

Minimise risk

This guide outlines use of UPL Australia products to give you the best chance of maximising your potato crop production. Seasonal and local conditions, and other management factors, can impact the final outcome.

FASCINATE® DRY

FASCINATE® 280

ASULOX®

UNIMARK®

SELECT® XTRA

MAINMAN®

SHENZI®

DITHANE® RAINSHIELD®

PENNCOZEB®

RANMAN®

ZEEMIL®

AFFIX®

CONAN® STICKS

VITALROOT®

GAXY®



www.upl-ltd.com/au



1

WEED CONTROL

An effective weed management program is essential, as:

- potatoes are not competitive until row closure
- weeds compete for light, water & nutrients
- weeds can act as a host for diseases & pests



FALLOW WEED CONTROL

FASCINATE® 280SL

glufosinate-ammonium 280g/L

- ✓ annual grasses
- ✓ perennial grasses
- ✓ broadleaf weeds

- reliable weed control
- quality low-foam SL formulation
- glyphosate alternative
- compatible

Group 5 Herbicide

Rate: 280–950 g/Ha*

FASCINATE® DRY

glufosinate-ammonium 500g/kg

- ✓ annual grasses
- ✓ perennial grasses
- ✓ broadleaf weeds

- reliable weed control
- quality low-foam formulation
- high loading
- easy-to-use granular formulation
- glyphosate alternative
- compatible

Group 10 Herbicide

Rate: 200g–2kg/Ha*

IN-CROP WEED CONTROL

UNIMARK® 750WG

metribuzin 750g/kg

- ✓ some annual grasses
- ✓ most annual broadleaf weeds

- controls a range of broadleaf weeds & some annual grasses in post-emerged potato crop
- suppresses sub-clover, docks & wild oats
- can be used up to 6 leaf or up to 10 cm

Group 5 Herbicide

Rate: 280–950 g/Ha*

SELECT® XTRA

clethodim 360g/L

- ✓ annual grasses
- ✓ perennial grasses

- an extra strength formulation – store & handle less product
- rainfast within 1 hour
- reliable control of ryegrass, other grass weeds & volunteer cereals

Group 1 Herbicide

Rate: 100–330 ml/Ha*

ASULOX® (Vic & Tas only)

asulam 400g/L

- ✓ docks

- controls docks in emerged potato crops
- apply before potato foliage obscures dock weed

Group 18 Herbicide

Rate: 2.8L in 280–440L water/Ha*

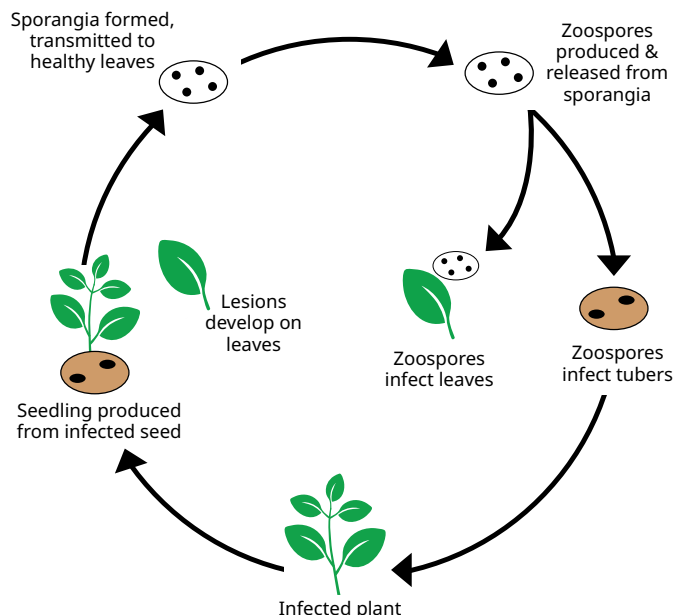
* depending on weed species present and state of application

2

MANAGING FUNGICIDE RESISTANCE

Fungicide resistance is a growing concern in agriculture. A growing number of fungicide resistances has been documented internationally in a range of crops.

To ensure longevity of fungicides, it is recommended to rotate through different chemistry group to ensure maximum efficacy is maintained.



PINK ROT CONTROL

ZEEMIL® 720

Mancozeb 640g/kg
& Metalaxyl 80g/kg

Group M3 & M4 Fungicide

Rate: 250g/100L water

WHP – 7 days

ZEEMIL® 50

Metalaxyl 50g/kg

Group M3 & M4 Fungicide

Rate: 20 kg/Ha

WHP – not required

SCURF SUPPRESSION**

AFFIX® 250SC

Azoxystrobin 250g/L

Group 11 Fungicide

Rate: 5–10 ml per 100m row

WHP – nil

**Suppression only – black scurf
& silver scurf

EARLY BLIGHT CONTROL

AFFIX® 250SC

Azoxystrobin 250g/L

Group 11 Fungicide

Rate: 300–400 ml/Ha

WHP – not required

CONAN® STICKS

Chlorothalonil 720 g/L

Group M5 Fungicide

Rate: 1.1–1.8 L/Ha

WHP – not required

ZEEMIL® 720

Mancozeb 640g/kg
& Metalaxyl 80g/kg

Group M3 & M4 Fungicide

Rate: 250g/100L water

WHP – 7 days

PENNCOZEB® 750DF

Mancozeb 740 g/kg

Group M3 Fungicide

Rate: 150–200 g/100L
water or 1.7–2.2 kg/Ha

WHP – not required

LATE BLIGHT CONTROL

RANMAN®

Cyazofamid 400 g/L

Group 21 Fungicide

Rate: 150–200 ml/Ha

WHP – 7 days

AFFIX® 250SC

Azoxystrobin 250g/L

Group 11 Fungicide

Rate: 500–600 ml/Ha

WHP – nil

ZEEMIL® 720

Mancozeb 640g/kg
& Metalaxyl 80g/kg

Group M3 & M4 Fungicide

Rate: 250g/100L water

WHP – 7 days

DITHANE® RAINSHIELD® NEOTEC®*

Mancozeb 750g/kg

Group M3 Fungicide

Rate: 150–200 g/100L
water or 1.7–2.2 kg/Ha

WHP – 14 days

The premium
mancozeb
formulation

3

IPM FRIENDLY PEST MANAGEMENT

POTATO MOTH CONTROL

SHENZI®

Chlorantraniliprole 400g/L

Group 28 Insecticide

Rate: 50 ml/Ha

WHP – Nil

Only target foliar infestation of potato moth. Moth Larvae in the soil or within the stem will not be controlled. Apply with a spray interval of 10–14 days.

SHENZI: THE RIGHT CHOICE FOR POTATO MOTH CONTROL

SHENZI® is an insecticide formulation for control of Lepidoptera insect pests in horticultural and broadacre crops.

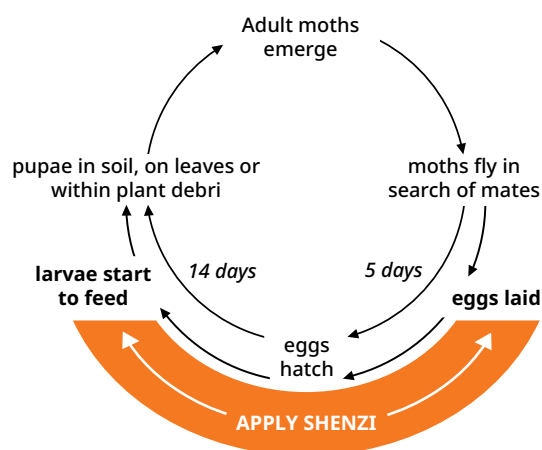
SHENZI is ideal for IPM programs. It offers an alternative to older, broad-spectrum options which impact the populations of natural potato moth predators in the crop.

- Potato moth (*Phthorimaea operculella*) can cause significant damage to tubers & plants
- Larvae tunnel through leaves & tubers making them hard to control

- ▶ Control should therefore be targeted prior to larvae moving to tubers or soil
- ▶ Use SHENZI to target foliar infestation, to control emerging larvae & all stages of larval development

Potato Moth Lifecycle

- Adults lay eggs 2 days after emerging
- Eggs are found on the underside of plant leaves
- Incubation is around 2 weeks in summer – with this extending in cooler months
- In warmer weather, the life cycle can be completed within 4 weeks, allowing for multiple generations in a growing season



APHID CONTROL

MAINMAN®

Flonicamid 500g/kg

Group 29 Insecticide

Rate: 140–200 g/Ha

WHP – 14 days

Apply at first sign of aphid infestation. A minimum re-treatment interval of 2 weeks must be observed. Do not apply more than 2 applications. Use the higher rate under high pest pressure.

MAINMAN: NEXT GENERATION APHID CONTROL

Using MAINMAN allows for effective control of aphids while also allowing for aphids' natural predators – the ladybird beetle and lacewing – to be unaffected and work in conjunction with chemical.

- Aphids can transmit a range of viruses including potato leaf roll virus, potato Y virus (PVY) and potato virus A
- The primary source of PVY spread is through aphids
- It only takes a small number of aphids to spread the virus quickly



For MAINMAN 500 WG to be most effective:

- ▶ Ensure thorough & even coverage
- ▶ Apply in sufficient water & adjust water volumes according to crop growth stage
- ▶ use only MEDIUM spray droplets

Always read the label and follow the label directions in full before any application

3

MAXIMISING YOUR POTENTIAL - NATURALLY

SUPPORTING NATURAL GROWTH

VITALROOT®

GoActiv seaweed filtrate + plant available P(6.6%) & K(4.8%)

- supports natural root growth & structures
- improves early root development preparing the crop for tuber bulking

Biostimulant

Rate: 1 L/Ha, water volume <1000L/Ha

Apply 2-3 applications. 1st at full emergence GS12-13, 2nd 2 weeks following first GS28, and if required 3rd at tuber initiation - 4 weeks following first application.



SUPPORTING HEALTHY ROOT GROWTH & ACTIVITY

Vitalroot in Potatoes

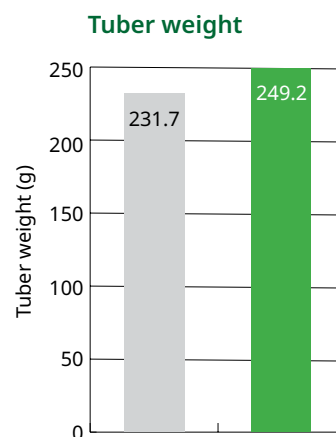
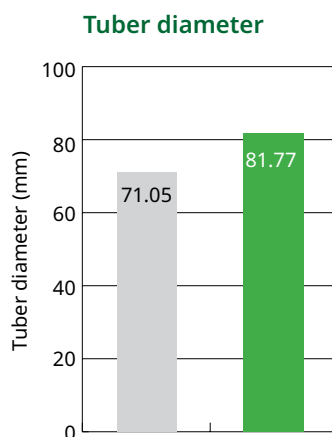
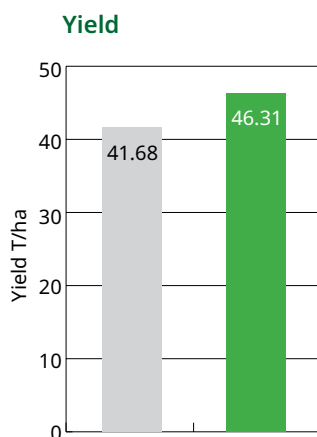
Tent Hill, QLD

2021

Variety - FL1867

- untreated
- VITALROOT 2 applications x 1L/ha @ GS13 & GS38

VITALROOT applied at full emergence & 2 weeks following full emergence. Harvested 137 days post planting. Trial conducted by Azaaka Research



GROW MORE WITH LESS, USE GAXY

GAXY®

100% *Ascophyllum nodosum* seaweed filtrate

- super concentrated with low application rates
- highly compatible
- maximises natural plant growth potential

Biostimulant

Rate: 400 ml/Ha or 60 ml/100L water

2 applications:
1st at tuber initiation (6 leaf)
2nd at Bulking (BBCH 40-45)

GAXY: GROW MORE WITH LESS

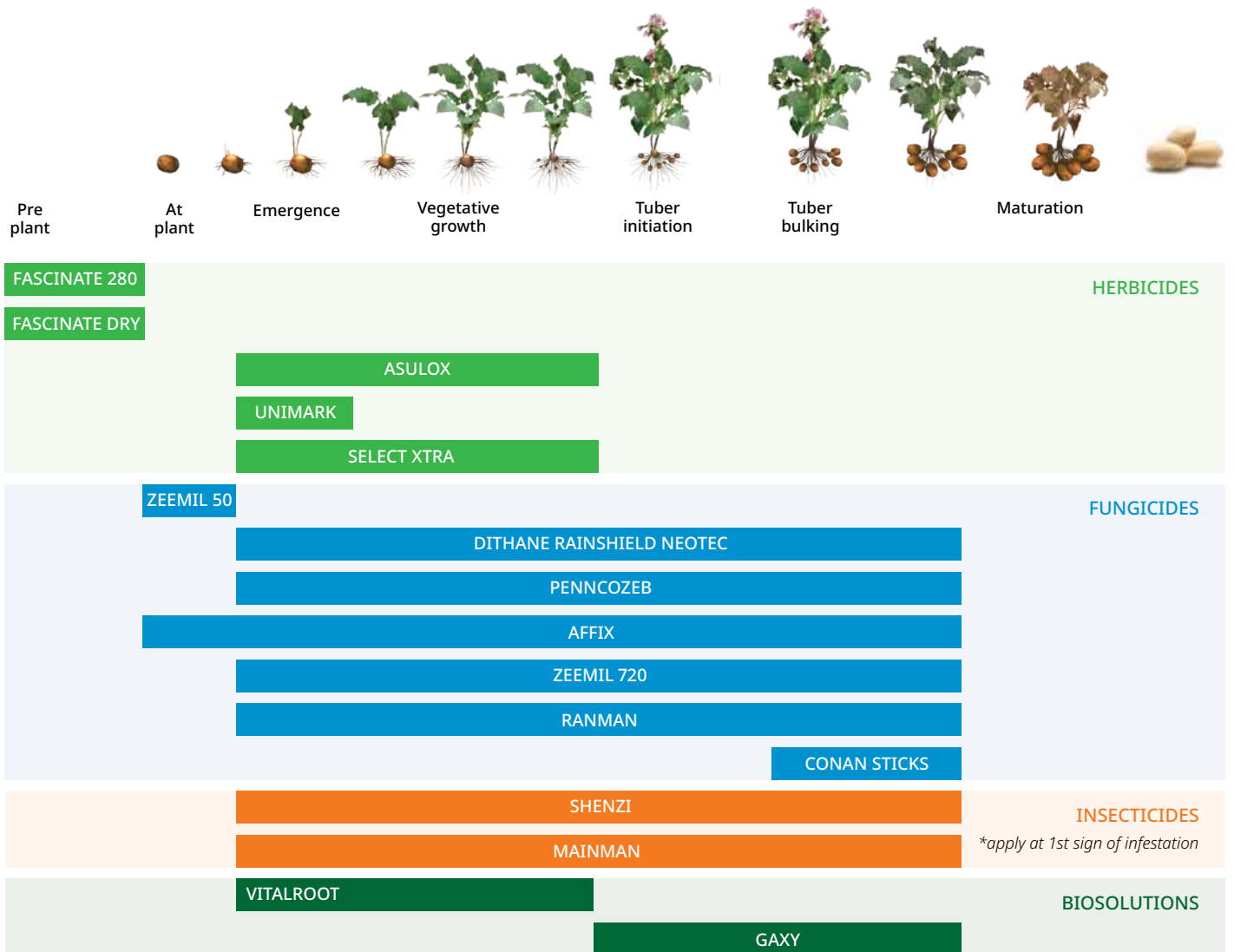
GAXY is a highly concentrated *Ascophyllum nodosum* extract. Sustainably harvested by hand from the north Atlantic sea, it is extracted within 24 hours of harvest using a patented cold pressed, cell burst technology.

This extraction process gives a super concentrated extract for lower application rates in the paddock.

Because no heat or alkaline products are used in the extraction process, and there's no additives, GAXY is highly compatible with plant protection and nutrient products



UPL PRODUCT APPLICATION TIMING IN POTATO CROP PRODUCTION



	PRODUCT	USE	ACTIVE	CHEMICAL GROUP
HERBICIDE	FASCINATE DRY	Annual & perennial grasses, broadleaf weeds	Glufosinate-ammonium 500g/kg	10
	FASCINATE 280 SL	Annual & perennial grasses, broadleaf weeds	Glufosinate-ammonium 280g/L	10
	ASULOX	Docks	Asulam 400g/L	18
	UNIMARK	some annual grasses & most annual broadleaf weeds	Metribuzin 750g/kg	5
	SELECT XTRA	Annual & perennial grasses	Clethodim 360g/L	1
FUNGICIDE	AFFIX 250 SC	Early blight, late blight, black scurf & silver scurf suppression	Azoxystrobin 250g/L	11
	CONAN STICKS	Early blight	Chlorothalonil 720g/L	M5
	DITHANE RAINSHIELD NEOTEC	Early blight	Mancozeb 750g/kg	M3
	PENNCOZEB 750 DF	Early blight	Mancozeb 750g/kg	M3
	ZEEMIL 720	Early blight, late blight & pink rot	Mancozeb 640g/kg + Metalaxyl 80g/kg	M3 + 4
	RANMAN	Late blight	Cyazofamid 400g/L	21
	ZEEMIL 50	Pink rot	Metalaxyl 50g/kg	4
INSECTICIDE	MAINMAN	Green peach aphid, melon aphid & potato aphid	Flonicamid 500g/kg	29
	SHENZI	Potato moth	Chlorantaniliprole 400g/L	28
BIOSTIMULANT	VITALROOT	Supports root growth & structure	GoActive seaweed filtrate + P 6.6% + K 4.8%	NA
	GAXY	Maximises natural plant growth potential	100% cold-pressed <i>Ascophyllum nodosum</i> filtrate	NA

Always read the label and follow the label directions in full before any application





UPLAustralia



UPLAUSLtd

SALES ORDERS

Telephone 1800 078 007
Fax 1800 078 048
Email auorders@upl-ltd.com

05/24

UPL Australia Pty Ltd shall not be liable in any manner whatsoever for errors, omissions, results, loss or damage whether consequential or otherwise resulting from the use of and / or access to information.

® registered trademarks of UPL group of companies.



UPL Australia Pty Ltd
Level 3, 70 Hindmarsh Square
Adelaide South Australia 5000
T: (08) 8112 0900 F: (08) 8112 0999
E: admin.aus@upl-ltd.com

www.upl-ltd.com/au